

**CCS Technical Documentation
NKC-1X Series Transceivers**

**Assembly and Disassembly
Instructions**

Table of Contents

	Page No
Disassembling the NKC-1X Basic Transceiver.....	3
Assembling the NKC-1X Basic Transceiver	9

Disassembling the NKC-1X Basic Transceiver

1. Hold the phone with the back facing you. At the bottom of the phone, press the battery cover with your thumb and forefinger.
2. Place your other thumb on the scoring, approx. one inch from the top of the phone. Apply pressure with the thumb and slide the back cover away from the bottom end of the phone to release it, then remove it.



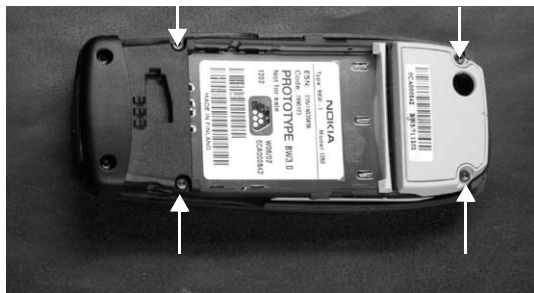
3. Remove the screws from the bottom end with specified tool.

4. Place your finger between the A- and D-covers' snap feature.

Note! Do not use a screwdriver in this phase, as it may leave marks on the phone's mechanics.

5. Lift the ATO module and remove the A-cover.





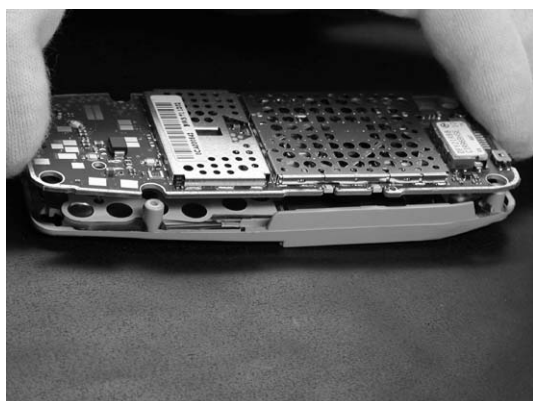
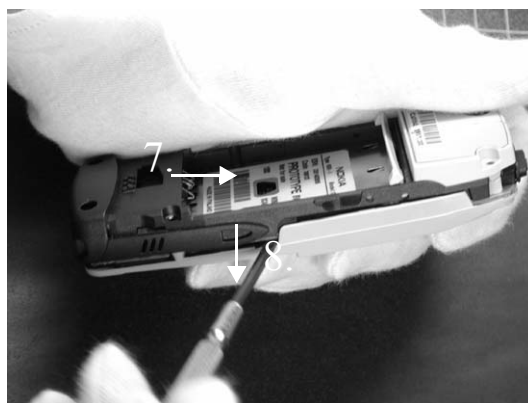
6. Remove the remaining screws using the specified screwdriver.

7. Place the screwdriver with a flat head between the C- and D-covers' snap feature.

8. Lever up the D-cover.

Note! Be careful not to leave marks on the phone's mechanics with the screwdriver.

Also note that the screwdriver must not hit the engine module or its components during assembly.



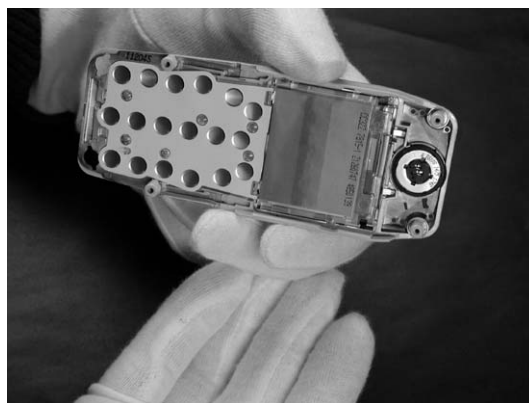
9. Lift and remove the engine module.

Note! The use of gloves is mandatory when removing the engine module in order to prevent fingerprints on the engine.

10. Remove the LCD module from C-cover.

Note! If the LCD module is reused, the use of gloves is mandatory to prevent fingerprints on the domes and elastomer connector

The domes and elastomer connector may damage if touched.



11. Remove the speaker assembly from the C-cover.

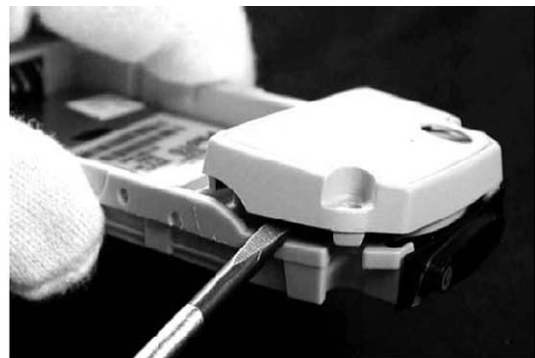
Note! Handle with care, as the speaker and the springs may damage if touched.



- 12.** Get a firm hold of the middle of the latch.
Bend the latch and pull it away from the antenna.

- 13.** Gently place a screwdriver with a flat head between the antenna and the D-cover.

- 14.** Lift the antenna.



- 15.** To remove the battery connector, gently press the connector downwards from the battery base side of the D-cover until the connector detaches.

Note! Do not reuse the battery connector after disassembly.

- 16. Remove the Power key from its location on the D-cover.



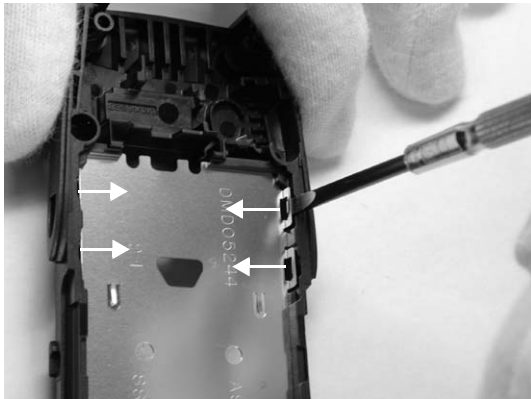
- 17. Gently flip the system connector from its location.

Note! Do not reuse the system connector after disassembly.

- 18. Place a screwdriver with a flat head between the buzzer and D-cover and gently lift the buzzer from its place.

Note! The heat staking features will break during disassembly. However, this will not prevent replacing a new buzzer onto the D-cover.





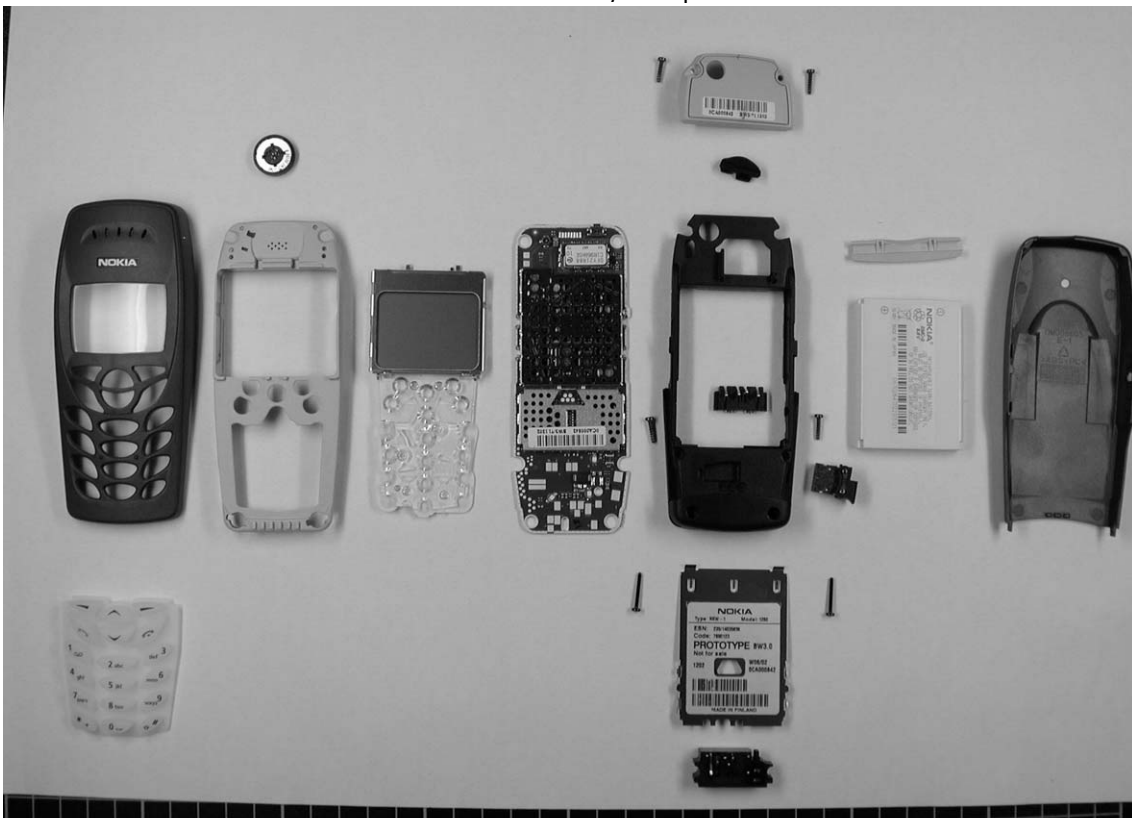
19. Release the four side locks with a screwdriver.



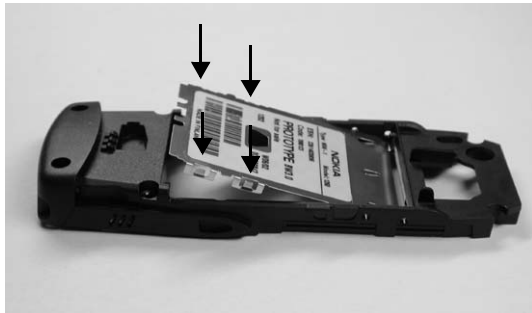
20. Push the metal deck from the engine side.

Note! Do not reuse the metal deck after disassembly.

Disassembly completed.



Assembling the NKC-1X Basic Transceiver

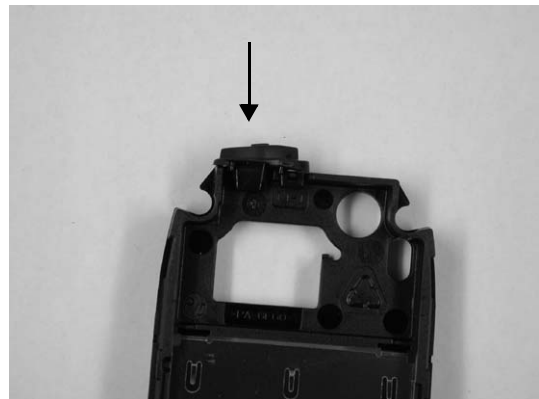


1. Assemble the metal deck from the back cover side by pressing it down with your fingers.

All four tabs should snap into the slots of the D-cover.

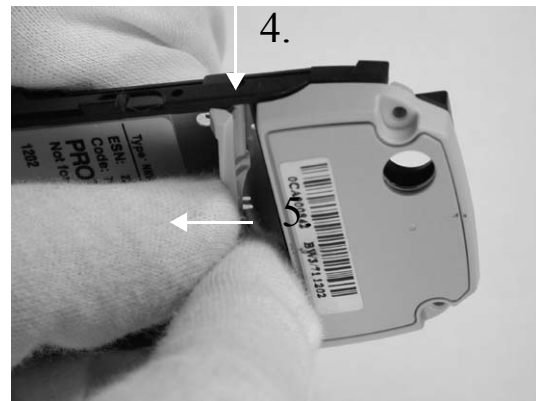


2. Press the Power key into its place.



3. Press the antenna key into its place.

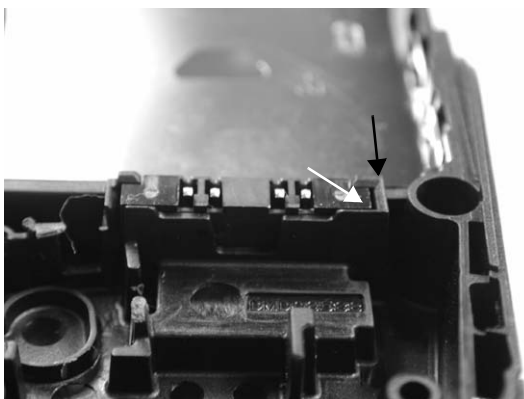
4. Place one end of the battery latch into the hole in the D-cover.
5. Bend the latch and move the other end into the hole in the D-cover.



6. The battery connector will be assembled into the D-cover with interference fit.

Place connector into the D-cover with tweezers.

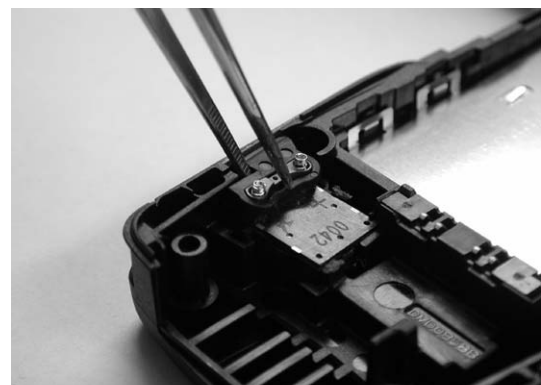
Push the connector into the D-cover slot with your fingers.

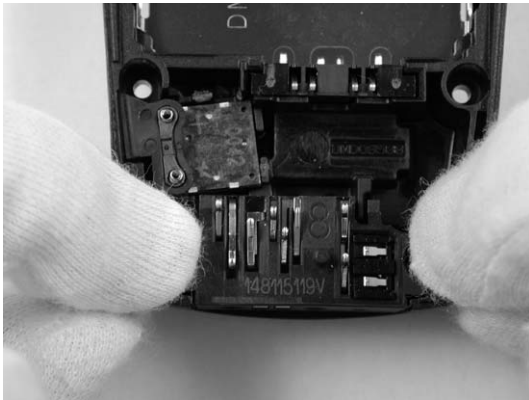


Note! Make sure that the battery connector (white arrow) is below the edges of the D-cover (black arrow) after assembly.

7. Place the buzzer assemble into its place. Use tweezers.

Note! Make sure that the buzzer springs stay intact.

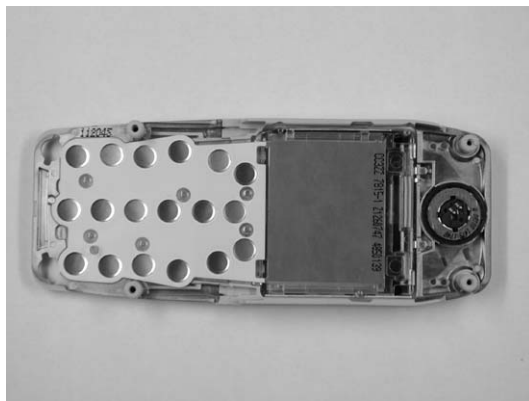
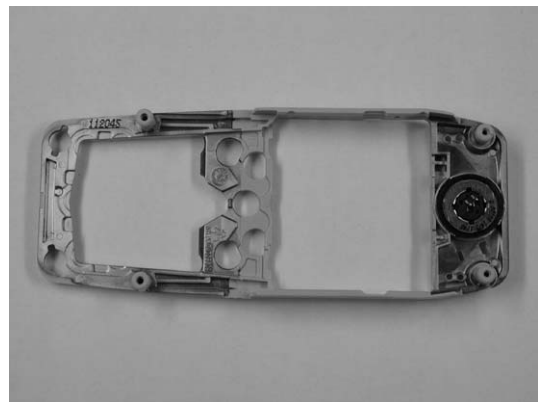




- 8. Place the system connector into its place.

- 9. Place the speaker into its place.

Note! Handle with care, as the speaker and the springs may damage if touched.

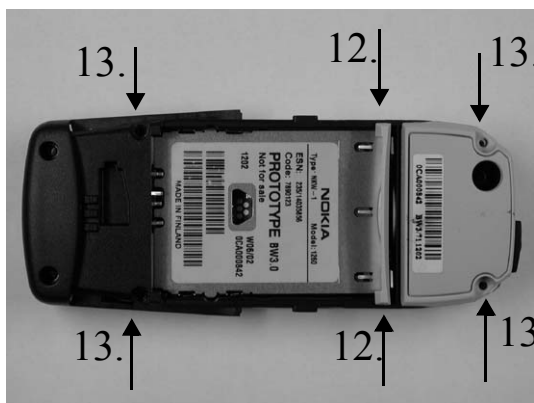
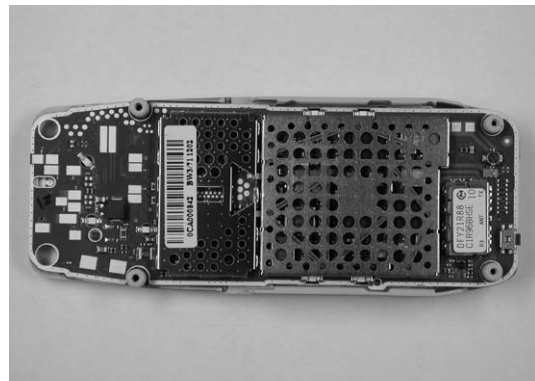


- 10. Gently place the LCD module into its place.

Note! If the LCD module is to be reused, the use of gloves is mandatory to prevent fingerprints on the domes and elastomer connector.

The domes and elastomer connector may damage if touched.

11. Place the engine module on top of the LCD module.

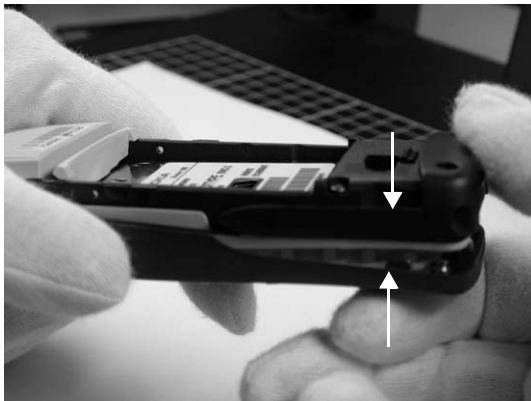


12. Place the assembled D-cover on top of the C-cover. Press the D-cover to snap the side locks.
13. Fasten the 4 screws to fix the D- and C-covers.

Note! Use the specified screws and torque; 21Ncm/350rpm

14. Place the keymat onto the A-cover.



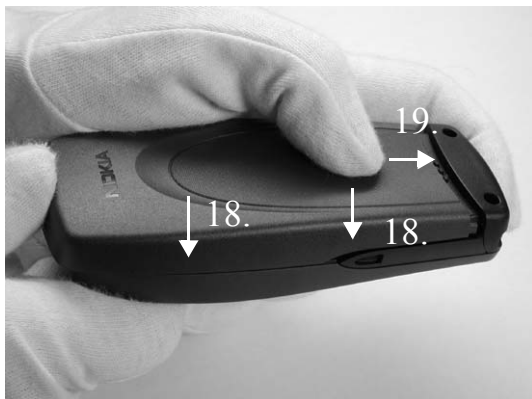


15. First, put the internal module onto the A-cover. Make sure the upper part is put in place first.

16. Press the bottom part onto the front part, so that it snaps onto the A-cover.

17. Fasten the 2 screws to fix the A-cover.

Note! Use the specified screws and torque; 21Ncm/350rpm.



18. Place the B-cover on the phone.

19. Slide the cover so that the spring snaps the cover into place.

Assembly completed!

This page was intentionally left blank.